

Brent Start

Adult Education College

COURSE GUIDE 2024-2025



SUPPORTED BY
MAYOR OF LONDON



Welcome to Brent Start

Unlock your potential. From web designers to business owners, everyone has to start somewhere.

We've got courses available in everything from Digital Skills to Maths and English, you can even begin carving a new career path with a course in Health & Social Care.

In a time when the cost-of-living crisis is biting across the country and the job market is rapidly changing, we are committed to helping our residents develop the skills they need to boost their confidence and find good, secure work.

We look forward to seeing you!

Councillor Jake Rubin

Cabinet Member for Planning, Regeneration and Growth



Brent Start is a great place to learn, gain skills and build knowledge and confidence to progress further.

We are very proud of our learners' success, some have gone on to run their own businesses and others have gone onto new employment or progressed to further or higher education. Brent Start is ambitious and we want to help you realise your goals and aspirations.

Join us and we will help and support you throughout your time at Brent Start.

Ala Uddin

Head of Employment, Skills and Enterprise Brent Council



Thank you for taking the time to pick up this guide and to find out more about Brent Start.

We have a great range of courses, from those that give you the opportunity to try something new and meet new people, right through to formal qualifications. As well as a huge variety of subjects to choose from, there are also various levels for differing abilities and requirements.

Brent Start is a fantastic place to get the support you need to progress into a better job or to enjoy the wider benefits of learning, such as health and wellbeing and improving your confidence. Our highly experienced and dedicated staff will ensure you gain the skills and knowledge you need to prepare for a fantastic future.

Good luck and I look forward to welcoming you to Brent Start!

Marc Jordan

Head of Brent Start



Brent start welcomes applications from anyone wanting to improve their skills, irrespective of gender, disability, social class, family circumstances, marital status, sexual orientation, race, ethnic or national origin, or religion. We are an LGBTQ+ friendly organisation and at Brent Start you are free to learn in an open and supportive environment.

Contents

Why choose Brent Start for your studies	4
What's new for 2024-25	6
How to enrol	8
Course cost options	9
ESOL	10
English	14
Maths, Accounting and Payroll	16
Vocational	18
Digital Skills	20
Supported Learning	24
Tailored Learning	28
Family Learning	30
Brent Start Learning Centres	32

TERM DATES: 2024-2025

Autumn Term:

Monday 9 September - Saturday 21 December

Half Term: 21 October-26 October

Spring Term:

Monday 6 January-Saturday 5 April

Half Term: 17 February-22 February

Summer Term:

Tuesday 22 April-Saturday 19 July

Half Term: 26 May-31 May

Why choose Brent Start for your studies?



Brent Start is an Adult Education service, offering part time courses to local residents aged 19+. We are funded by the Greater London Authority (GLA) and Education and Skills Funding Agency (ESFA), to deliver high quality courses in venues across Brent.

Whether you want to gain a qualification in maths, English, English for Speakers of Other Languages (ESOL), digital skills, childcare, supporting teaching and learning, health and social care or be more confident with computers, or life in general, we offer a variety of courses to suit your needs. We also have a wide range of courses and workshops to help our residents get back into employment or develop new skills. You can also support your child's development through our Family Learning courses.

GUIDANCE FOR STUDY

Visit a Brent Start Centre and meet our friendly Learner Support Officers who can assist with choosing the right course for you.

LEARNING CENTRES

Our Digital Skills Hub located in Wembley and the Hillside Centre located in Stonebridge have a learning resource facility for when you need to catch up on your coursework or homework. A member of Staff will also be around to assist.

We offer:

- Specialist Digital Skills Applications
- PC suite with full Microsoft Office package
- Windows 11
- Internet access
- Printing

CHILDCARE SUPPORT

Brent Start currently offers childcare support to some of our learners on accredited courses through local nurseries, giving our learners the opportunity to study.

DISCRETIONARY LEARNER SUPPORT FUND

- Brent Start can provide financial support to assist learners with the costs associated with learning, including a contribution to tuition fees, books and childcare fees. Visit a centre and speak to an adviser to find out if you're eligible to apply.

INSTALMENT PLANS

- Brent Start offers the opportunity to split some course fees into 3 payments made over the duration of studying.

ADDITIONAL LEARNING SUPPORT (ALS)

Brent Start believes high quality support is an imperative part of Learners' success enabling every individual to reach their academic potential. Brent Start offers a variety of additional learning support methods depending upon the individual's needs. We offer one-to-one, workshop and in-class support across all mainstream courses.

Examination concessions are applied for where applicable and upon meeting the necessary criteria.

DYSLEXIA AND DYSCALCULIA

If you have declared you have a learning support need, such as dyslexia or dyscalculia, on your enrolment form, the ALS Coordinator will contact you after enrolment.

- We will request you to bring a copy of your report in advance so we can plan your support needs.
- You can self-refer for a dyslexic screening assessment
- Support in the Learning Centre
- Loan of equipment including laptops and reading pens

- Exam concessions assessments (where applicable). Please note concessions will only be granted when learners attend or receive additional support.
- Exam concessions (where applicable). Please note concessions will only be granted when students attend the Study Centres for support.

In addition, if you have declared any of the following, during your interview, we will ensure your needs are discussed.

HEARING IMPAIRMENT

If you have declared you are a British Sign Language user on your application form, an interview with the coordinator will be arranged to ensure Brent Start can meet your needs prior to the curriculum interview. A communicator is provided for both the inclusion and curriculum interview.

MOBILITY

An accessibility assessment and a Personal Emergency Evacuation Plan will be in place for learners with mobility requirements.

MEDICAL NEEDS

If you have a medical condition that affects your health, please notify us at application/enrolment. Please let your tutor or the ALS coordinator know if your health needs change. Please request an appointment with the ALS coordinator at application or enrolment if you want to discuss any additional needs. With your agreement, all tutors involved in your teaching are informed of any learning difficulties and additional needs to ensure we support you at Brent Start.

If you have any queries please contact our Learning Support Services Officers.

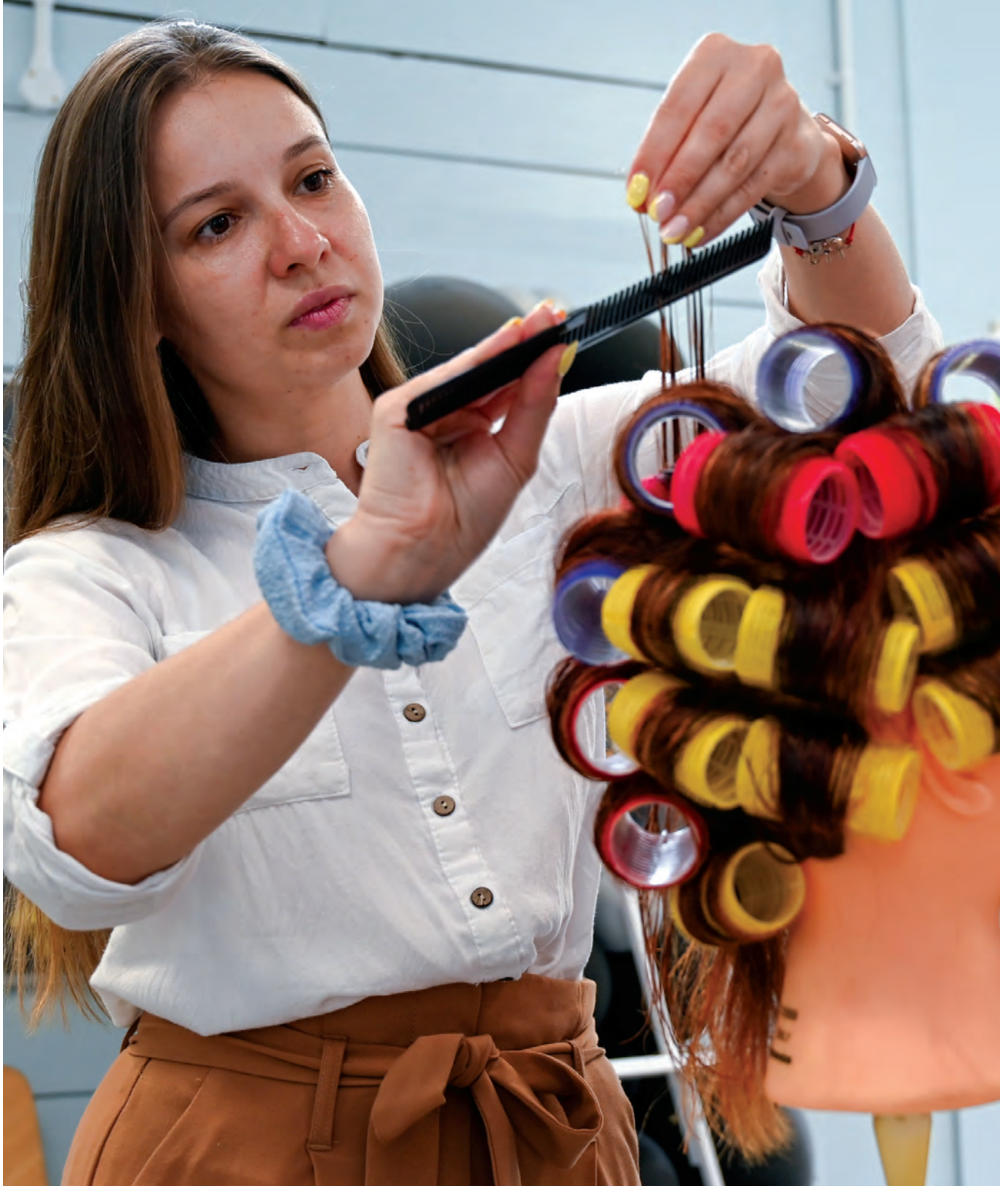
Main Switchboard **020 8937 3950**

What's new for 2024-25

HAIRDRESSING ACADEMY

Following the successful launch of the Brent Digital Skills Hub, Brent Start is excited to announce the opening of a brand-new Brent Hairdressing Academy, due to launch in September 2024. Located on the Harlesden

High Road at 16 Craven Park Road, NW10 4AB, the learning venue will comprise of a training hair salon and a classroom, offering part-time courses and workshops for beginners in hairdressing, barbering, hair colouring, hair cutting and hair styling.

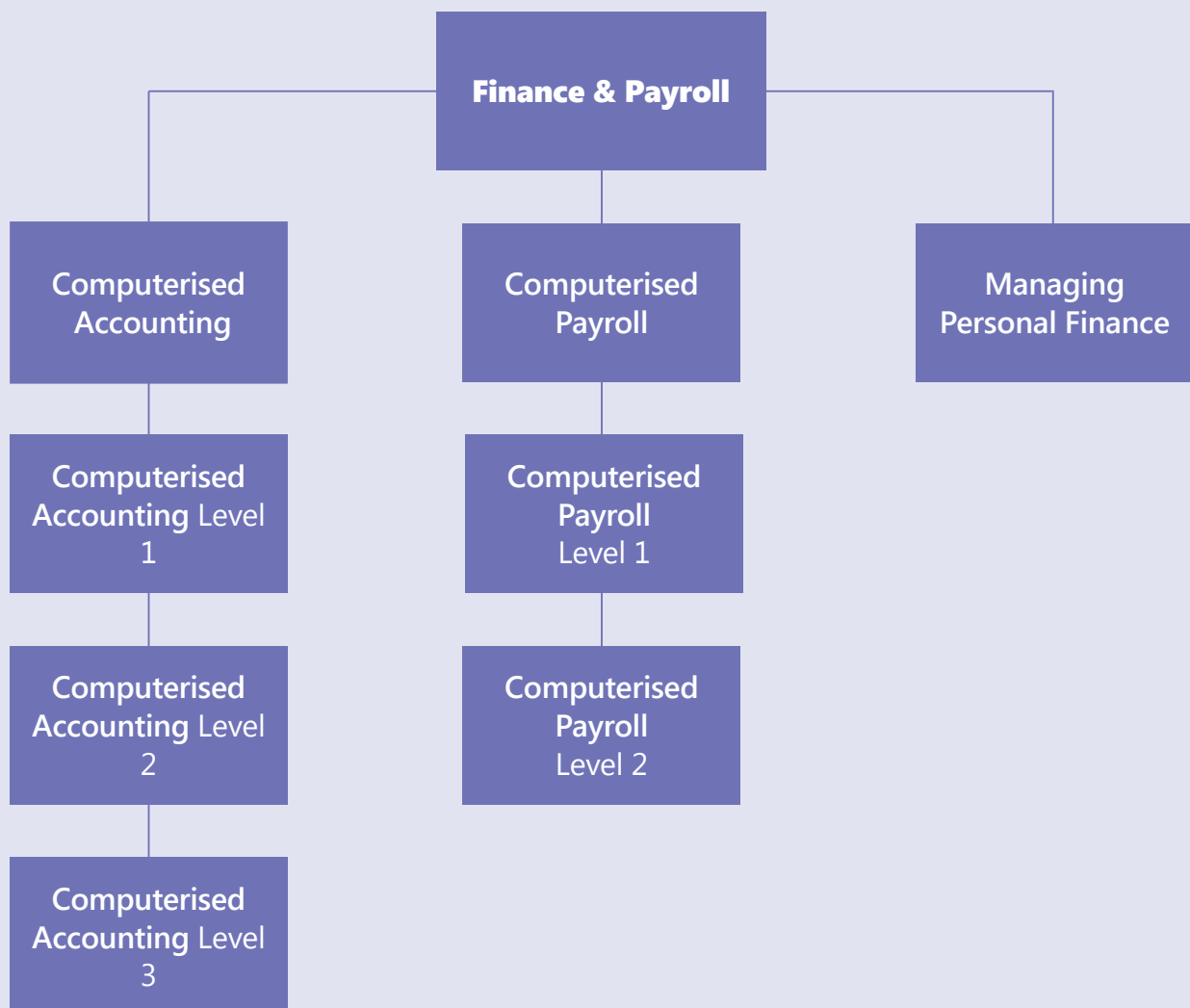


BRAND NEW PAYROLL AND ACCOUNTING QUALIFICATIONS

Gain valuable expertise in accounting, bookkeeping, and payroll transactions with our computerised accounting and payroll qualifications. Ideal for individuals aspiring

to or already working in the financial services sector, including banks, building societies, insurance brokers, and self-employed business owners. Our 5-hour-per-day, once-a-week accounting and payroll courses are designed to move your career forward.

Finance & Payroll Progression Pathways



How to enrol



Please visit our website for a full list of courses at www.brent.gov.uk/brentstart. There are two ways to enrol on a Brent Start course:

ONLINE

Some courses have online enrolment. Visit our website to see the course details and enrol online.

IN PERSON

You can enrol in person for any of our courses by visiting a Brent Start centre; a list of the locations is on the back of this booklet.

Most courses begin in September, but we also have classes starting throughout

the academic year.

Please call the team on the number below for more information.

To get your free or discounted course you will need to provide proof of certain benefits and proof of identity, such as a passport, during enrolment.

If you have any questions, you can call Brent Start on **020 8937 3950** or email: brent.start@brent.gov.uk

Course costs options



SKILLS FOR LIFE AND EMPLOYMENT COURSES

These courses are free for many learners depending on your circumstances.

LEISURE AND WELLBEING COURSES

Discounts are available for those on certain benefits or earning under a certain amount.

FULL-COST COURSES

These courses are full price and no discounts apply.

Are you worried about paying for childcare while doing your course?

You may be entitled to support for childcare costs. Please ask about this when visiting the centre.

Concessionary rates for various courses are available if you are in receipt of state benefits, on a low income (under £25,300.60 per year) and have residential status.

You may also be eligible to have the course fees paid through the Discretionary Learner Support Fund.

If you want to achieve your first full level 3 qualification, which is equivalent to a technical certificate or diploma, or two full A levels, you may be eligible to have the fees paid. Please contact us to see if you are eligible.

Courses and fees may be subject to change.

ESOL (English for speakers of other languages)

Improve your English for everyday life, education and employment with ESOL. Our courses will help you gain confidence and speak, listen, read and write better in English.

OUR COURSES

We have a wide range of ESOL courses available for adults (19+) at all levels from beginners (Pre-Entry) to Upper Intermediate (Level 1). Our courses cover English grammar and vocabulary and help you with reading, writing, listening and speaking. The focus is on reading in term 1, speaking and listening in term 2 and writing in term 3.

There are additional courses to support learners in specific areas:

- ESOL Conversation
- ESOL Grammar and Punctuation
- ESOL Vocabulary and Spelling
- ESOL extra support – an extra class to help learners prepare for exams
- ESOL Grammar Booster – help with and practice of key areas of grammar in a short, intensive course.

And there are supplementary courses to help ESOL students learn about other aspects of life in the UK

- Living in the UK – learn about the UK and British culture and traditions
- Car Theory Test – learn the vocabulary you need to help you pass the Theory Driving Test
- ESOL Film Club – watch and discuss films, improve your vocabulary and learn about British culture
- ESOL IT – courses to help you get better at using a computer.

At the end of some of our courses, if you are ready, you take an exam and get a certificate. When you have an ESOL certificate in all four skills (reading, writing, speaking and listening) at Entry Level 3, you can apply for vocational courses such as Childcare or Health and Social Care. When you have an ESOL certificate at Level 1, you can progress to an English course and then GCSE English.

We are proud of the friendly and caring environment we offer all our learners. They are consistently very positive about their learning experience here and say studying ESOL at Brent Start really helped them develop their confidence, their life skills and their English and gave them the opportunity to meet people and make friends.

- 99.6% of our learners say they are happy with their course
- 99.2% of our learners say they are happy with the teaching
- 98.5% of our learners say Brent Start is a good place to learn.

Our other ESOL courses will support you with your grammar and vocabulary but specific courses are available to help you develop different skills in different ways:

WHEN, WHERE AND HOW YOU CAN STUDY

Our courses are completely flexible, so you can build a timetable to suit your lifestyle. We have courses in the morning, afternoon and evening, as well as courses on Saturdays at a range of sites across the borough. You can choose how many hours you want to study each week, anything from just two hours up to ten or more.

HOW TO ENROL

Contact us on **020 8937 3950** to complete a short assessment. Our team will then advise

on the best course for you. Come and join our community of over 550 ESOL learners to develop the language skills you need to

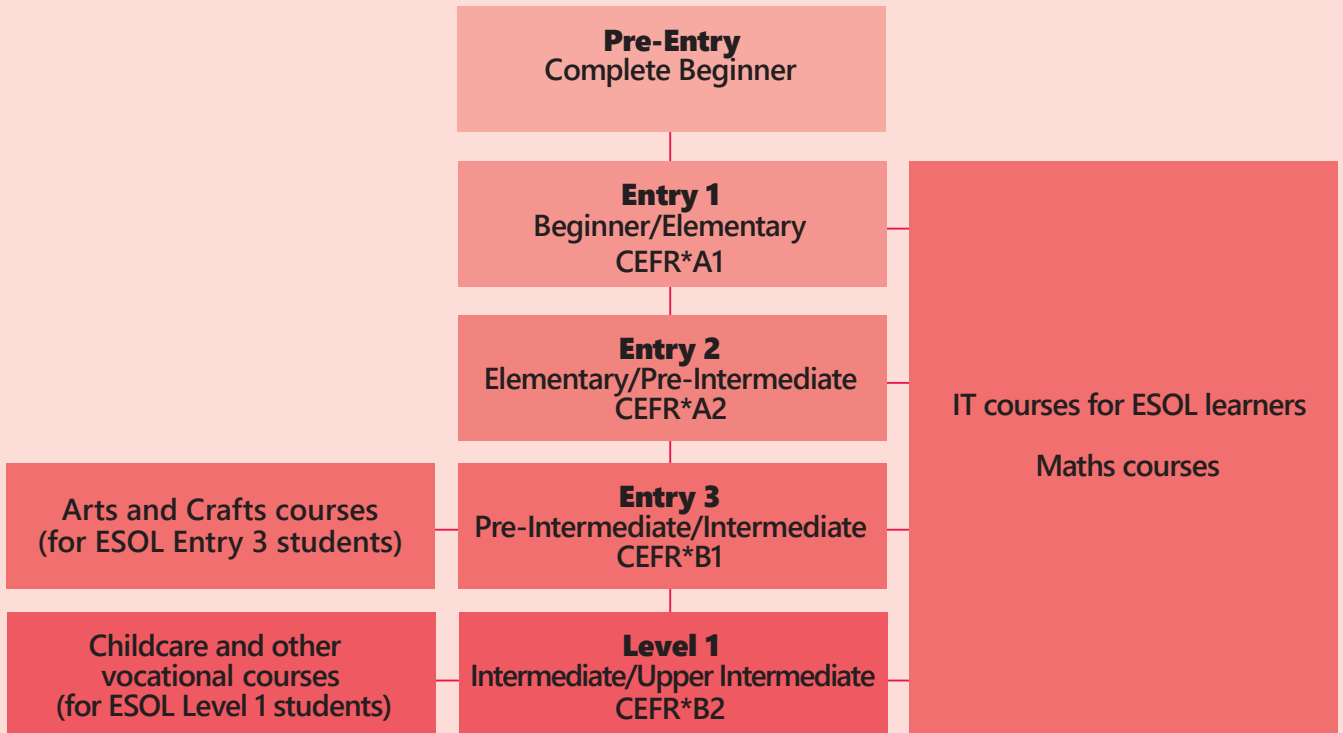
socialise, work, access services and explore life in wider society.

DON'T TAKE OUR WORD FOR IT, READ WHAT OUR LEARNERS SAY.

- **I learned lots of things. I book my appointments by myself now.**
- **I am happy with the improvement in my language. I no longer need an interpreter for my appointments.**
- **The well-organized course provides essential information for the integration of the country.**
- **I meet people and make friends.**
- **This course is helpful as I know how to do basic things on a computer that I did not know before.**
- **I suggest everyone joins a course at Brent Start. It's a nice place with humble staff.**
- **The English lesson helped me regain confidence in myself and break the barrier of fear of speaking English.**
- **I feel safer when I talk to other people and I can already solve some problems. I am more confident.**
- **I'm loving it. I've really enjoyed being with the class and the teacher is very good at what she does.**
- **The teaching style is excellent. They help us by using different methods to be sure we understand.**
- **It is help me to improve my English as before I barely knew how to speak now, I understand a lot of it.**
- **I love studying English and it is helping me a lot to communicate.**
- **I love the classes. The teacher has helped me understand English better and sometimes, when I can't say something, I remember what he taught.**

Data and quotes from survey March 2024

ESOL



*CEFR = Common European Framework of Reference for Languages



STUDENTS' STORIES

Studying ESOL and improving your English can enable you to study a vocational course, start volunteering or increase your chances of finding a job or getting a promotion. Read the stories of some of our current learners:



Jean Nilakshini

'I would like to thank my teacher and the ESOL Team for their support and giving me the opportunity to study English at Brent Start. It's been really helpful to me. I feel more confident when speaking with my friends, my children's class teachers and helping my children with their schoolwork. I am now doing a Teaching Assistant course and I have the confidence to start volunteering at a school.'

Natalia Levicka

'Having been a teacher in Ukraine, the ESOL course at Brent Start gave me the opportunity to learn the language and develop. I believe that I will now be able to achieve success and career growth at work. I feel more confident and even happier. Many thanks to the college for organizing the course and also many thanks to my teacher for the encouragement and support.'



Fatma Ahnia

'The Brent Start course gave me the opportunity to improve my English and my wonderful teacher succeeded in making me a fluent English speaker. I have really appreciated the course because it has been so useful for me in so many ways. Thanks to Brent Start for your help. I am now in the process of preparing for a new job position.'

English

Functional Skills English are nationally recognised qualifications, often required for higher studies. If you want to gain a qualification in English, Functional Skills will help you to learn how to read, write and communicate in English clearly and develop the skills and confidence you need for real-life situations and the workplace. In English Workshop courses you will work at a gentler pace to improve your reading comprehension and writing skills, with a focus on spelling, grammar, punctuation and sentence structure. English Prepare for Functional Skills courses will help strengthen your skills for Functional Skills courses, where you will work on developing good practical communication skills in reading, writing, speaking and listening, needed for everyday life. Initial assessments will be

required to place you in the right class.

There are also some short courses to supplement your learning on any of the main courses mentioned below. These courses are designed to provide extra support for areas of weakness such as spelling, grammar and writing.

- English Workshops
- English Prepare for Functional Skills
- English Functional Skills Entry level to L2
- English Grammar and Writing Entry 3 to L1
- English Preparatory Studies for ESOL Learners.





Maths, Accounting and Payroll

Enhance your numeracy skills for everyday life education, employment, and career advancement. Our creative methods to teach numeracy skills aid in developing critical thinking and problem-solving abilities, crucial for managing personal and professional situations. Proficiency in numbers, measurements and statistics enables you to assist children with their homework.

Maths courses

- Basic Skills
- Awards and Certificates
- Functional Skills Entry Levels 1, 2 & 3
- Bridge Courses
- Functional Skills Levels 1 & 2
- GCSE one year and two year courses

Accounting & Payroll Courses

- Managing Personal Finances
- Computerised Accounting Levels 1, 2 & 3
- Bridge to Accounting Levels 3
- Computerised Payroll Levels 1 & 2.

COURSE CONTENT

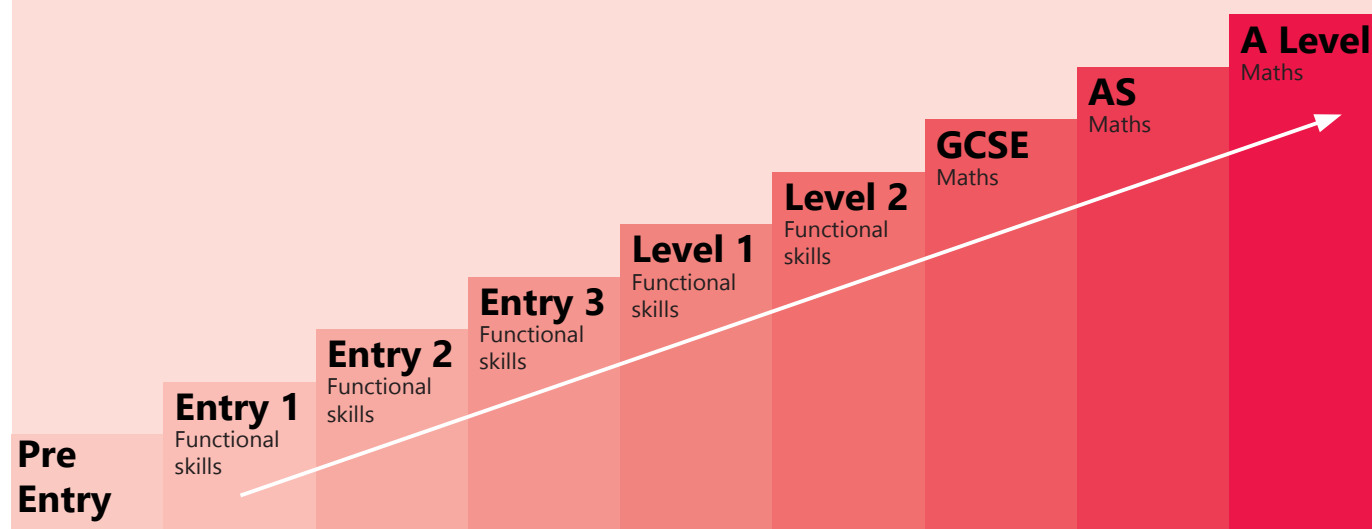
In the Basic Skills course, you will get exposure to number bonds, number operations, measures, shape and space. Functional Skills Entry 1 to 3 covers numbers, measures, shape and space and handling data. At all three levels, you develop problem-solving skills. In addition, we introduce various methods to solve questions that will help you assist your children with school homework.

Functional Skills Levels 1, 2, and GCSE cover mathematical concepts in more detail. You will acquire skills to solve complex multi-step problems. Completing these courses offers better career progression.

Computerised Accounting and Payroll qualifications will help you gain knowledge of accounting, bookkeeping, and payroll transactions. These courses are ideal for anyone who wants to work or is already working in the financial services sector, like banks, building societies, insurance brokers or self-employed business owners.

Functional Skills courses are 3 to 4 hours per week. GCSE, Accounting, and Payroll courses are 5 hours per week.

Mathematics progression pathways



ENTRY REQUIREMENTS

Functional Skills Entry levels, Levels 1 & 2, GCSE

No prior qualification is required. However, you must complete an initial assessment identifying your current subject knowledge level.

Computerised Accounting Level 1 & Computerised Payroll Level 1

No prior knowledge or qualification is required. However, you must achieve a minimum Entry 3 in Maths and English initial assessment to join the course.

Computerised Accounting Level 2

You must have a prior accounting qualification at level 1 and a minimum Entry 3 in Maths and English from the initial assessment.

Computerised Accounting Level 3

You must have a prior accounting qualification of at least level 2, Maths level 1 or higher, and an Entry 3 qualification in English.

Computerised Payroll Level 2

You must have a prior payroll qualification at level 1, a Maths level 1 or higher, and an Entry 3 qualification in English.

Improve your numeracy skills and
support your children with Maths homework?

JOIN

Multiply

Multiply is a new Government – funded FREE programme to help you improve your numeracy skills. You are eligible for the MULTIPLY courses if you are 19+ and don't have Maths GCSE at grade C or equivalent in Maths.

This course allows you to learn number operations, calculate the discount or VAT applied to your shopping, understand and calculate your income and expenditure and increase your chances of employment.

Our courses will build up your confidence with numbers and prepare you for taking advanced Maths courses like Functional Skills or GCSE.

Please contact the Brent Start admin team on **020 8937 3950**
or visit our website www.brent.gov.uk/Brentstart for more information.

Vocational

CHILDCARE, TEACHING ASSISTANT AND HEALTH AND SOCIAL CARE

Have you thought about a career working in Childcare, Schools or Health & Social Care? We offer industry recognised qualifications from Entry Level to Level 3. Higher level courses can lead to a License to Practice or into Further Education.

All courses are delivered by our industry experienced team of lecturers. Through our strong partnerships with local nurseries, schools, and care employers we can support you to find a work placement, where needed, while you study with us.

FOR 2024-2025 WE ARE OFFERING THE FOLLOWING NATIONALLY RECOGNISED QUALIFICATIONS.

Working with Children

- Entry 3 Award Caring for a Child
- Level 1 Certificate in Caring for Children
- Level 2 Diploma in Early Years Practitioner 2 (placement required in nursery)
- Level 1 Award Preparing to Work in Schools.
- Level 2 Certificate in Supporting Teaching and Learning (placement needed in a school)
- Level 1 Award in Understanding Safeguarding in Education & Childcare Settings
- Level 2 Certificate in Understanding Children and Young People's Mental Health.

Health and Social Care

- Level 1 Preparing to Work in Adult Social Care
- Level 2 Certificate in Health and Social Care
- Level 2 Diploma in Health and Social Care

- Level 3 Certificate in Preparing to Work in Adult Social Care
- Level 1 Award in Awareness of Mental Health and Well Being
- Level 2 Award in Awareness of Dementia.

All courses will be based at Brent Start Hillside Adult and Community Learning Centre, Twybridge Way, NW10 0ST. Some courses maybe be fully or partially online.

ENTRY CRITERIA

Entry and Level 1 courses

You will be assessed for your English/Literacy levels and be advised on which level you are suitable for.

For Level 2 courses

Your English level needs to be at Level 1. You should be confident to use MS Word and able to use a laptop/PC to access online learning and use the Internet to research

For Level 3 courses

Your English level needs to be at Level 2. You should be confident to use MS Word and able to use a laptop/PC to access online learning and use the Internet to research

ENROLMENT PROCEDURE

You can call our reception on **020 937 3950** or email Brent.Start@brent.gov.uk or come into Brent Start Hillside Adult and Community Learning Centre, Twybridge Way, NW10 0ST and book an appointment for initial assessment and enrolment.

When you come in for your assessment you will

- Be assessed on your English level
- Complete a comprehension assessment
- Be interviewed by one of our vocational team members
- Be advised on the most suitable vocational course for you.

If you are on a low wage or on benefits, courses are FREE.

You may also be eligible for support with childcare fees through the Discretionary Learner Support Fund.

Further information is available upon enrolment.



Digital Skills-Essential skills for work and life

Gaining or improving basic computer skills is essential in today's digital age, where technology is blended into our daily lives. For beginners and those at an intermediate level, learning these skills empowers you to manage tasks efficiently, stay connected, and enjoy entertainment. Enhancing these skills increases productivity and opens new opportunities making it a valuable investment in personal and professional growth.

These five key areas of digital skills are covered across all courses to varying

degrees: using devices and handling information, creating and editing, communicating, transactions and being safe online.

We offer a range of courses and workshops to support you in progressing your digital skills and build your digital confidence. Our courses include Essential Computer and Online Skills, Foundation Digital Skills, MS Excel for Work, Essential Digital Skills, Digital Functional Skills, Digital Development and Diploma for IT Users-ITQ. Workshops include Get Job Ready and Get to know your smartphone.

WHAT'S NEW FOR 2024/2025

MS Excel for Work

Possessing basic knowledge of and skills in MS Excel is an increasing advantage in the workplace, regardless of your chosen field. Excel is used amongst other things to organise and analyse data. The course includes an introduction to formulas and functions, relative and absolute cell references and tables and charts.

Level 2 Award in Digital Development

The Level 2 Award in Digital Development aims to inspire learners to explore careers that require digital competence and build communication skills through working together in a team. Programming in Python is a major aspect of the course.



Level 3 Diploma for IT Users

The Level 3 Diploma for IT Users aims to broaden learners' awareness and understanding of IT topics through units relating to software, communication, and user fundamentals, all useful for a variety of roles. The qualification includes the mandatory unit Improving Productivity Using IT and optional units include Website software, Design software and IT software fundamentals.

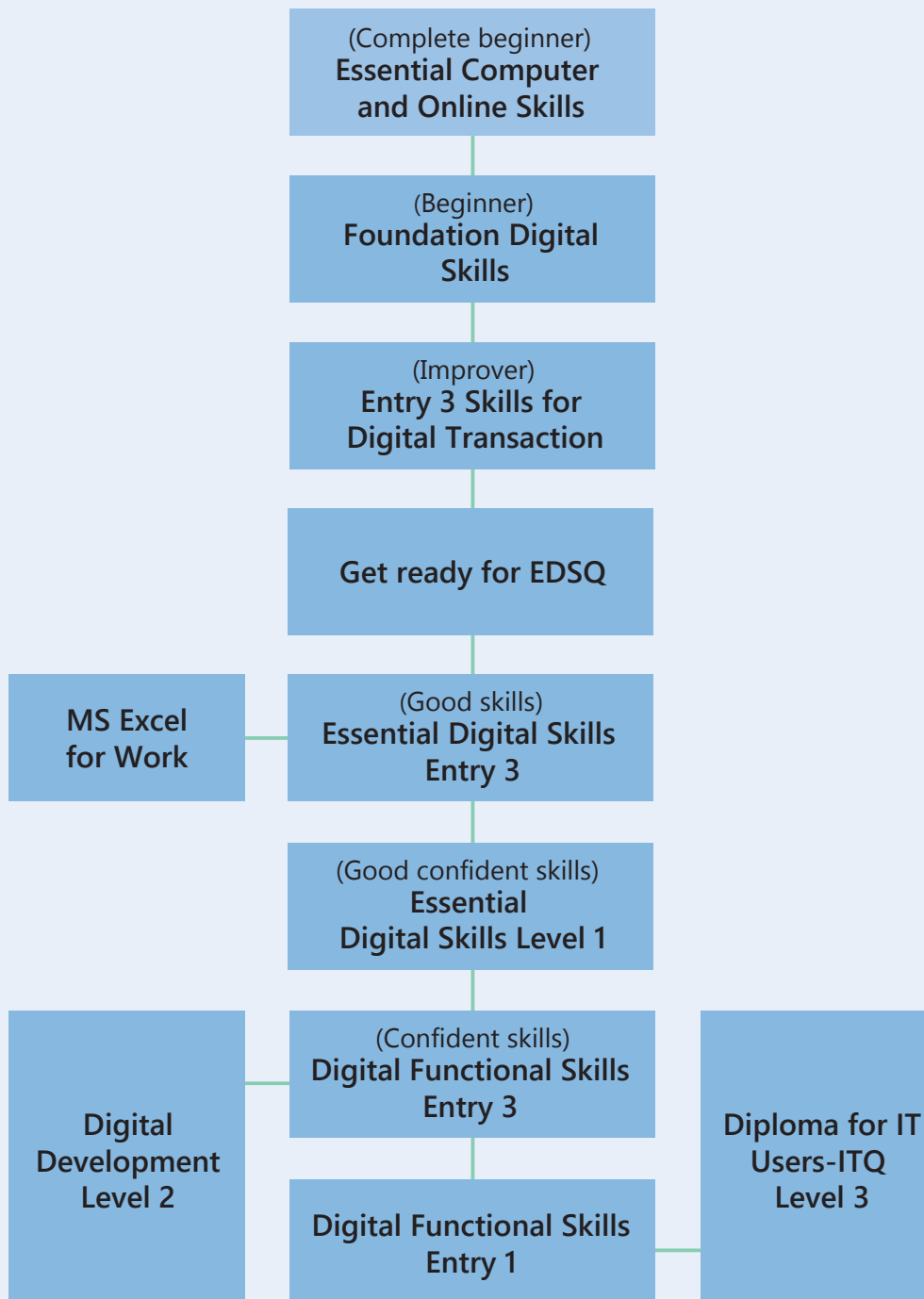


DIGITAL SKILLS LEARNER COMMENTS

- **Studying has done so much for me e.g., skills, confidence, meeting people and getting out of the house for exercise. I am getting there and plan to keep studying for my confidence and to improve my digital skills and English skills.**
- **I am building on the digital skills I have already. I really need to practice and update my skills.**
- **Studying has made a difference in my life and improved my digital skills and has given me confidence in myself. I would recommend Brent Start to my family and friends. I have already recommended Brent Start to a few people; especially older people like me.**
- **I have been able to break the spell that Excel was for accountants and data analysts, which would require too much of my time to learn and frankly difficult to master for a busy person like me.**
- **The content; the pace of interactive learning; the in-class assignments selected; the homework given; the discussions held made it such that each individual deeply felt "I can do this".**
- **Studying Excel has made a difference to my student life (taking a gap year from my part-time Geology degree at Birkbeck) and the jobs I'm applying for. I had been looking for a bar job, but my work coach suggested applying for part-time receptionist or admin roles where I can use my new Excel skills. Learning Excel ... has shown me how I could have used Excel formulas when I was doing my Geochemistry modules and saved me a lot of time.**

Data and quotes from survey March 2024

DIGITAL SKILLS PROGRESSION PATHWAY





Supported Learning

We offer accredited and non-accredited courses for adults with mild to moderate learning disabilities. We support learners in developing skills for life and work that will help them live independently in their communities.

The range of courses offered includes courses to develop learners' confidence, creativity and independent life skills, in addition to literacy, numeracy and digital skills. Safeguarding individual students' wellbeing is paramount and all supported students will receive training in being safe and keeping safe.

The Supported learning provision offers the following:

1. **Programme 1.** Four day Mon-Fri at Hillside Centre Stonebridge.
2. **Programme 2.** Two day Mon-Tue or Wed-Thurs at Harlesden Library Plus.

3. **Programme 3.** Essential Digital skills (EDSQ) and Pre-Entry Award in Essential Digital skills. Fridays at Hillside Centre Stonebridge.
4. **Enrichment**-all learners will participate in enrichment activities to promote British Values, Community awareness, the development of personal, social and life skills whilst understanding their voice in the community.
5. **Health and Wellbeing**-all Supported Learning students participate in weekly sporting and gym activities to promote health and wellbeing, working with others and engaging in leisure activities.

Programme 1	Programme 2	Programme 3
Hillside Centre	Harlesden Library	Hillside Centre
4 days (Monday-Thursday)	2 days (Mon/Tue and Thurs/Fri)	2.5 hours per week Every Friday 1-3:30pm
Qualifications: 1. Functional skills Maths and English E1-E3. 2. Pre- entry Award in Essential Digital skills. 3. Enrichment 4. Health and Wellbeing 5. OCN Diploma 6. New learners will complete level based on IA (initial assessment).	Qualifications: 1. Functional skills Maths and English E1-E3. 2. Pre- entry Award in Essential Digital skills. 3. Enrichment 4. Health and Wellbeing 5. OCN Diploma 6. New learners will complete level based on IA.	Qualifications: 1. Ascentis EDSQ L2(progression from L1) 2. Ascentis E1 Award in Essential Digital skills (Progression from Pre-entry) 3. New learners will complete level based on IA.

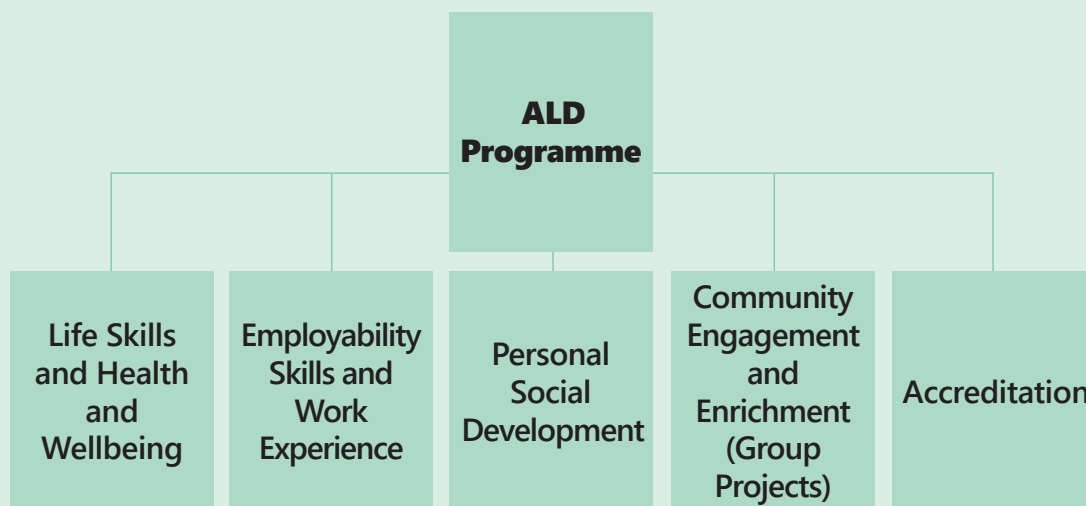
Progression:

The supported learning Programme at Brent Start is closely aligned with Preparation for Adulthood. This means all SEND students on programme are supported through a holistic and individualised programme of teaching and support that focusses on personalised targets which enables them to participate as

active citizens in their local community.

Brent Start's Supported learning students are supported to access external agencies who can support with their progression whether it is in voluntary activities or employment. We work closely with DWP to ensure all students have access to the right support.

Supported Learning Programme Model



- Linked to initial assessment data, individual targets and progression routes
- Develop e-learning and e-safety content
- Informed by learner forums
- Develop Citizenship/British values
- Embed Prevent
- Explore therapeutic input within Health and Wellbeing i.e. music, dance and art therapy
- Embed relationship and consent training for learners
- Learners undertake voluntary work experience to develop their skills
- Maths, English and IT mandatory for all ALD learners (contextualised i.e. money, shopping, etc)
- Digital Skills

Initial Assessment Process

Book a one to one appointment by calling our centre

Initial Assessment and interview with client and support worker or family member

Assessment and interview outcome discussed by team

Place offered on suitable course(s)

If not successful signposted to other organisations



STUDENTS' STORIES

Supported Learning courses will help you to live independently, to improve your maths, English and digital skills and enhance your health and wellbeing. Read the stories of some of our current learners:

Meet Kerry

Kerry decided to undertake courses of learning to improve his maths, English, develop life skills and make friends and gained many different skills. He has the confidence to talk to others, he is traveling independently, has worked as part of a team on an enterprise project to open the Hillside Snax Tuckshop which is run entirely by ALD learners at Brent Start Hillside Adult and Community Learning Centre. 'I have had a lot of help to learn new things'.



Meet Trusha

Trusha attended an FE provision locally and once she completed it, found herself at home and keen to do other things. She decided to take a course at Brent Start because she wanted to learn new things and make new friends. She also wanted to improve her reading and writing and thinks she has made good progress. Now she meets friends from the programme for social activities. 'The teachers are very good and help me a lot, they are very kind'.

Meet Harald

'I enjoy coming to the Gardening class and I've learnt so much about plants. I like to see how they grow and bloom and I've planted dahlias, sunflowers and tomatoes at home and also look after the bay leaves, red peppers, figs and rosemary in my mother's garden. I find gardening very calming and encourages patience. I like visiting the Brent Start Garden and trips to the allotment. I'd like to take more classes to improve other skills.'



Tailored Learning

PERSONAL DEVELOPMENT COURSES

We offer a variety of courses in arts and crafts, practical skills, health and wellbeing. These courses can be a step towards volunteering, employment, starting a business or for your own enjoyment.

Courses are available for beginners and more experienced students, with day and evening classes. These are mostly non-accredited courses with a potential progression to vocational courses, further training, self-employment, or employment, such as:

- Fashion Design and Sewing Skills
- Hairdressing and Barbering
- Commercial and Professional Floristry
- Organic Balloons Styling and Gifts
- Event Styling and Enterprise
- Sugar craft and Cake Decorating
- Drawing and Painting.

COMMUNITY PARTNERS

We work with a number of community partners in Brent who engage with vulnerable adults e.g. those who are socially isolated, live in areas of deprivation or need extra help due to unemployment.

We have a wide selection of courses, which can be tailored to the needs of communities and service users at various organisations across Brent if you have service users who need courses in ESOL, English, maths, digital skills, health, and wellbeing. Classes are usually 1-3 hours per week for 5-10 weeks including tasters, one-day workshops, events, activities, and joint projects, starting as and when required.

Please, contact us for more information on how we can work together at Brent Start on **020 8937 3950** or email us at: brent.start@brent.gov.uk.



STUDENTS' STORIES

Tailored Learning are exactly that, they are tailored to your needs and interests. Whether that is arts and crafts, practical skills or health and wellbeing, we have the right course for you. Read the stories of some of our current learners:

Oluwakemi Oderinde, ICT

Oluwakemi called Brent Start after asking for IT classes when she newly moved to the country. She walked into the Community ICT class not knowing how to turn on a computer. She has shown exemplary commitment to attending the Basic ICT class, then the Improvers ICT class and acquiring versatile skills to use Microsoft Office packages. Oluwakemi has successfully moved to an accredited digital skills class with Brent Start.



Silvana Pashaj, Hairdressing

Silvana was attending English Entry 3 class at Brent Start when she heard about the hairdressing course. It had always been her dream to have a career in hairdressing, so she joined immediately. From not knowing how to cut hair, she has rapidly learned many skills and techniques in cutting, styling and colouring hair. She still has a lot more to learn on her journey to eventually pursue a career in the hairdressing industry.

Anne Mahara, Floristry

For Anne, floristry has become a passion, hobby, and a career path. She was on a hairdressing course with Brent Start before Covid when she heard about the floristry course, so she joined as soon as she could. She is learning skills to help her pivot from floristry as a hobby to working in commercial floristry. Anne already produced bouquets for funeral arrangements, church décor and even weddings.



Family Learning

Family Learning, in Brent Start, offers free classes to support the wellbeing of parents by reducing isolation.

Teaching is usually in small groups which typically meet for two hours a week for anything between five and ten weeks.

Courses embed language, literacy, numeracy and IT where possible across a range of areas including creative learning.

In collaboration with our partners, parents are encouraged to participate in purposeful activities with/without their children.

ENTRY CRITERIA

The entry criteria range from Pre-Entry through to Entry 3 depending on the course requirements.

Sometimes, you will be given an assessment to be sure that you can cope with the work. In certain courses, you may only need to be able to follow simple instructions and be creative.

LIST OF COURSES

Our courses are listed below:

- Family Language
- Magic numbers
- Using IT with the Family
- Move On With Confidence
- British Sign Language
- Maths to the Rescue homework club
- Homework club for children of deaf parents
- Family Literacy
- Family Numeracy
- Families Love Books

- Play and Learn With Books (for under 5s)
- We Are Safe With Computers
- Out & About with Your Children
- Learning through Cooking
- Macrame /Tie-dye and other crafts
- REuse, REcycle, RE-Create.

VENUES

Our courses are run off-site where childcare provision is available for the children in Family and Wellbeing Centres, Primary Schools, Libraries and other organisations.

We also run taster courses in the libraries during the half terms, Christmas and Easter holidays.

WHO ARE THE COURSES FOR?

The course is for parents/carers of young children.

WHAT ARE THE ENTRY REQUIREMENTS?

You have to be motivated and able to communicate.

WHAT WILL I STUDY?

A variety of courses, a few examples are explained below.

Family Language

Family Language courses can also run as mixed level courses. In this case there is a different approach to the teaching and curriculum though the main aims remain the same.

We love sharing stories/ Families Love Books

Parents can explore the benefits of reading and sharing story books with their children including picture books, informationbooks, own stories and story games.

Magic numbers

Parents gain knowledge of how children learn maths and how they can support this with fun, everyday applications.

REuse, REcycle, RE-Create

Learn about the importance of recycling and using everyday recycled materials in original and unusual ways. Making Story Sacks: Bring a child's favourite book to life by making props puppets & games and a bag to go with it.

Play and Learn with Phonics

Support your child's learning of phonics at school in a fun way.

Using IT with the Family

Parents can keep up to date with IT skills, learn how to use the internet to find useful and educational sites for their children and keep the children safe from cyber hazards.

Move On With Confidence

Parents are supported in identifying strengths and skills gained through life experience and build an awareness of their value, as they consider the next goals towards employment.

How is the course taught?

In small groups of ten, which could sometimes include children. The venues could be in selected Family and Wellbeing Centres, primary schools or libraries. Call us on **020 8937 3950** for current locations.

How will I be assessed?

At the beginning of the course, you will be given an initial assessment in English and Maths.

By the end of the course what will I gain?

Courses are non-accredited and you will receive an internal Brent Start Certificate which will describe the skills you have learnt in preparation for other courses at Brent Start.

What materials do I need for the course?

Pens and a notepad.

What courses can I progress to after successfully completing this one?

Other accredited courses run by Brent Start which can be found in this guide.



Brent Start Learning Centres



www.brent.gov.uk/brentstart

Telephone **020 8937 3950**

SUPPORTED BY
MAYOR OF LONDON



www.facebook.com/BrentCouncil



x.com/brent_council



www.instagram.com/brentcouncil



www.linkedin.com/company/brent-council



Scan the code to register your interest to Brent Start