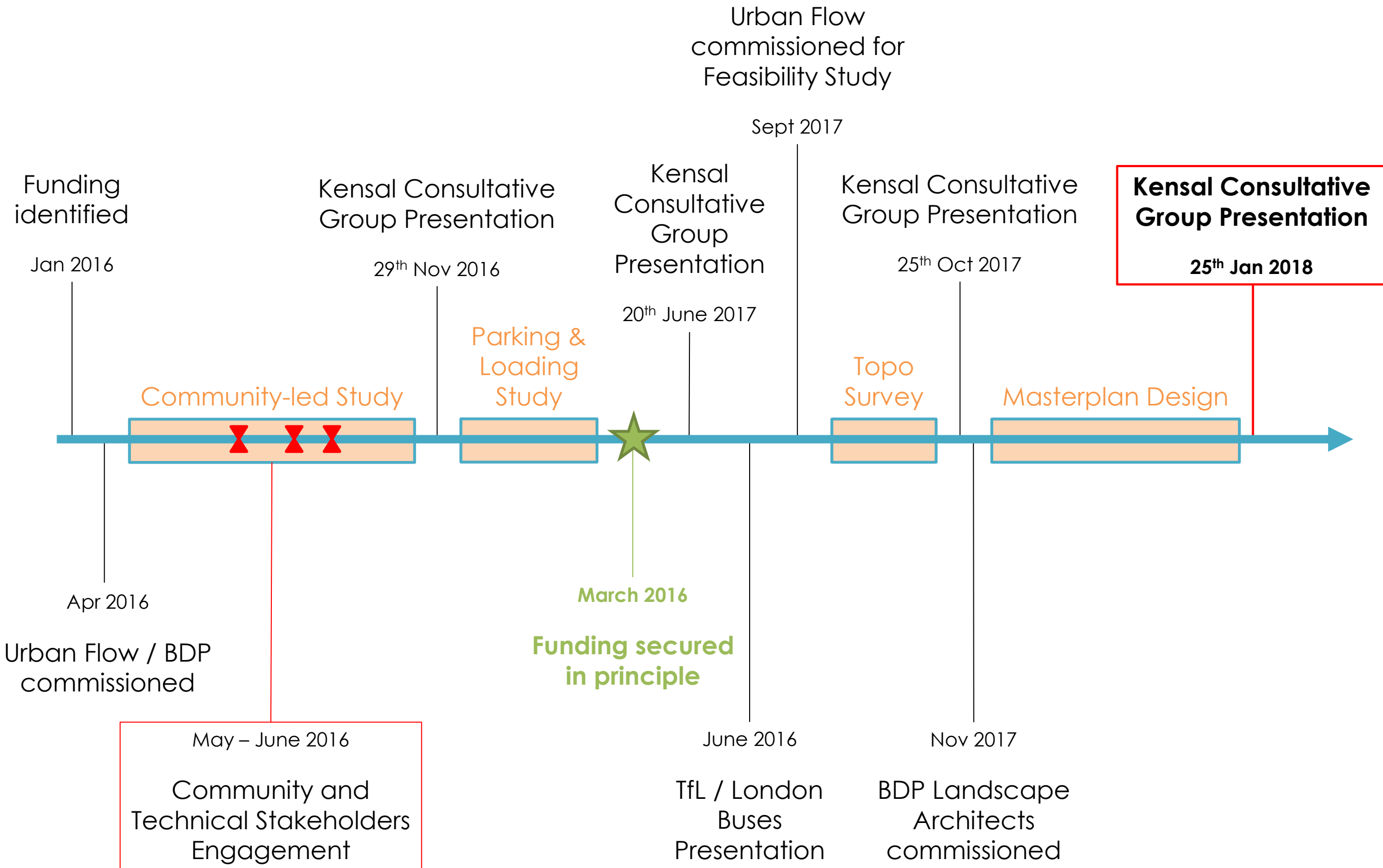


Kensal Corridor Feasibility Study Presentation

Kensal Consultative Group Masterplan Presentation

January 2018

Recap



Today's Presentation

Masterplan

- Kilburn Lane / Chamberlayne Road (southern section) (10mins)
- Chamberlayne Road (northern section) (10mins)
- Kensal Rise - Station Terrace (10mins)

How you can help

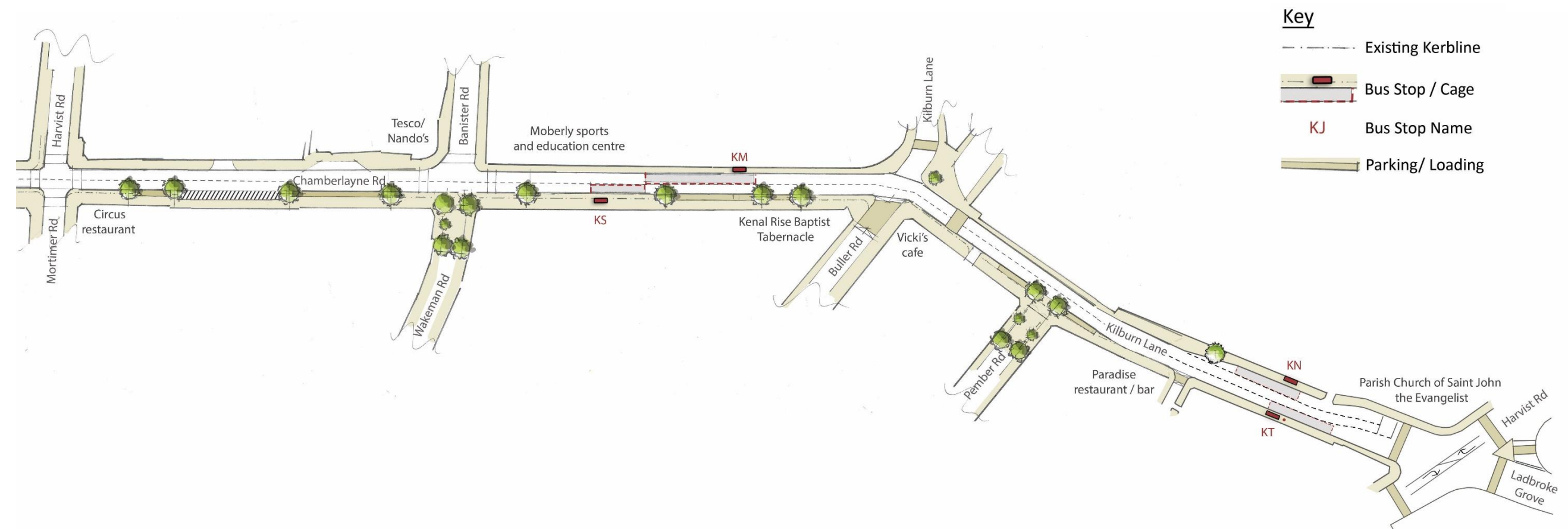
Discussion

What's Next?

- Programme and Milestones
- Key Project Risks
- Legacy Planning

Kilburn Lane / Chamberlayne Road (Southern Section)

Kilburn Lane / Chamberlayne Road Design Principles



Place

- Wider footways
- Removal of street clutter
- Introduction of street trees / planting
- Consistency of materials

Movement

- Reduced carriageway pinch points
- Improved traffic flow
- Removal of stepped kerb / improved bus stop accessibility
- Inset parking into footway
- Better loading facilities

Chamberlayne Road (Northern Section)

Chamberlayne Road Design Principles

Key

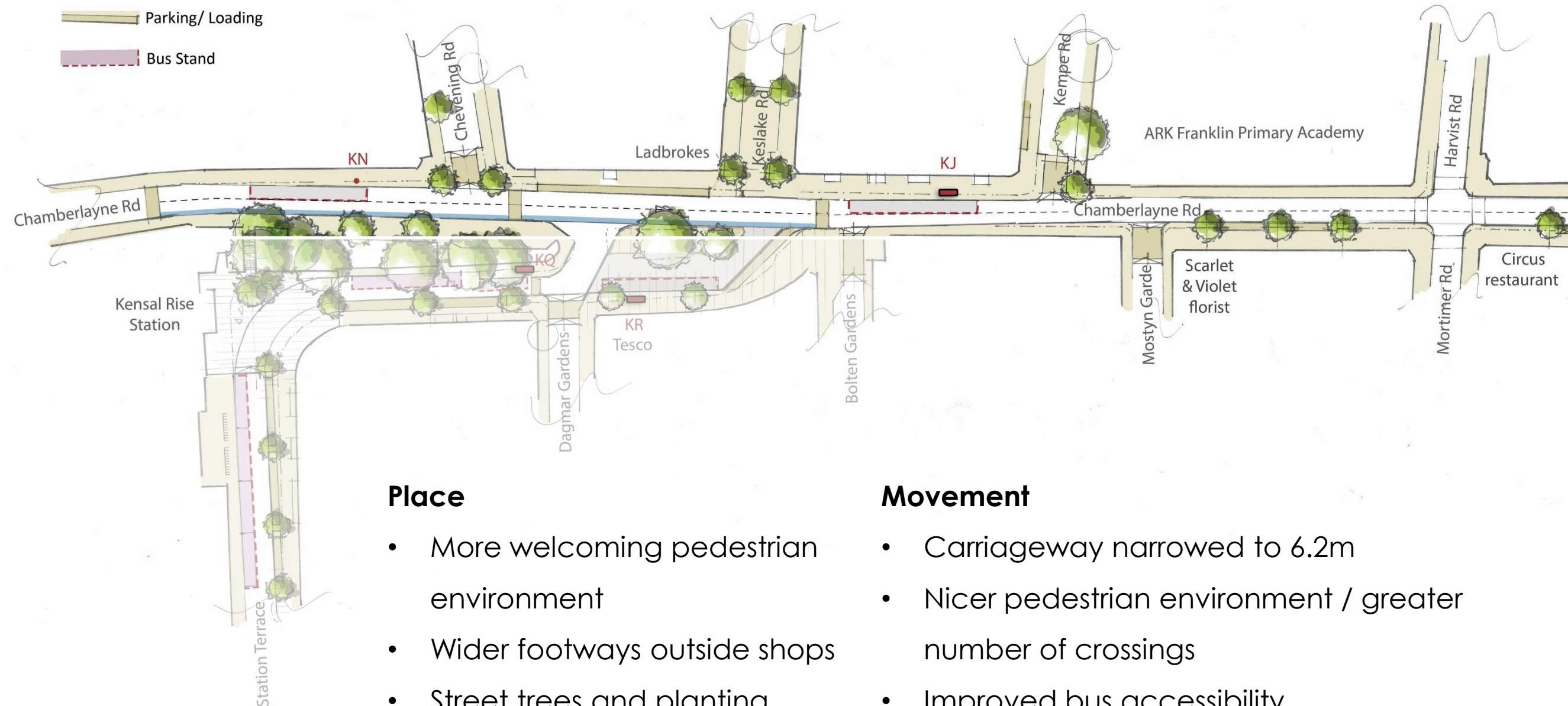
Existing Kerbline

Bus Stop / Cage

KJ Bus Stop Name

Parking/ Loading

Bus Stand



Place

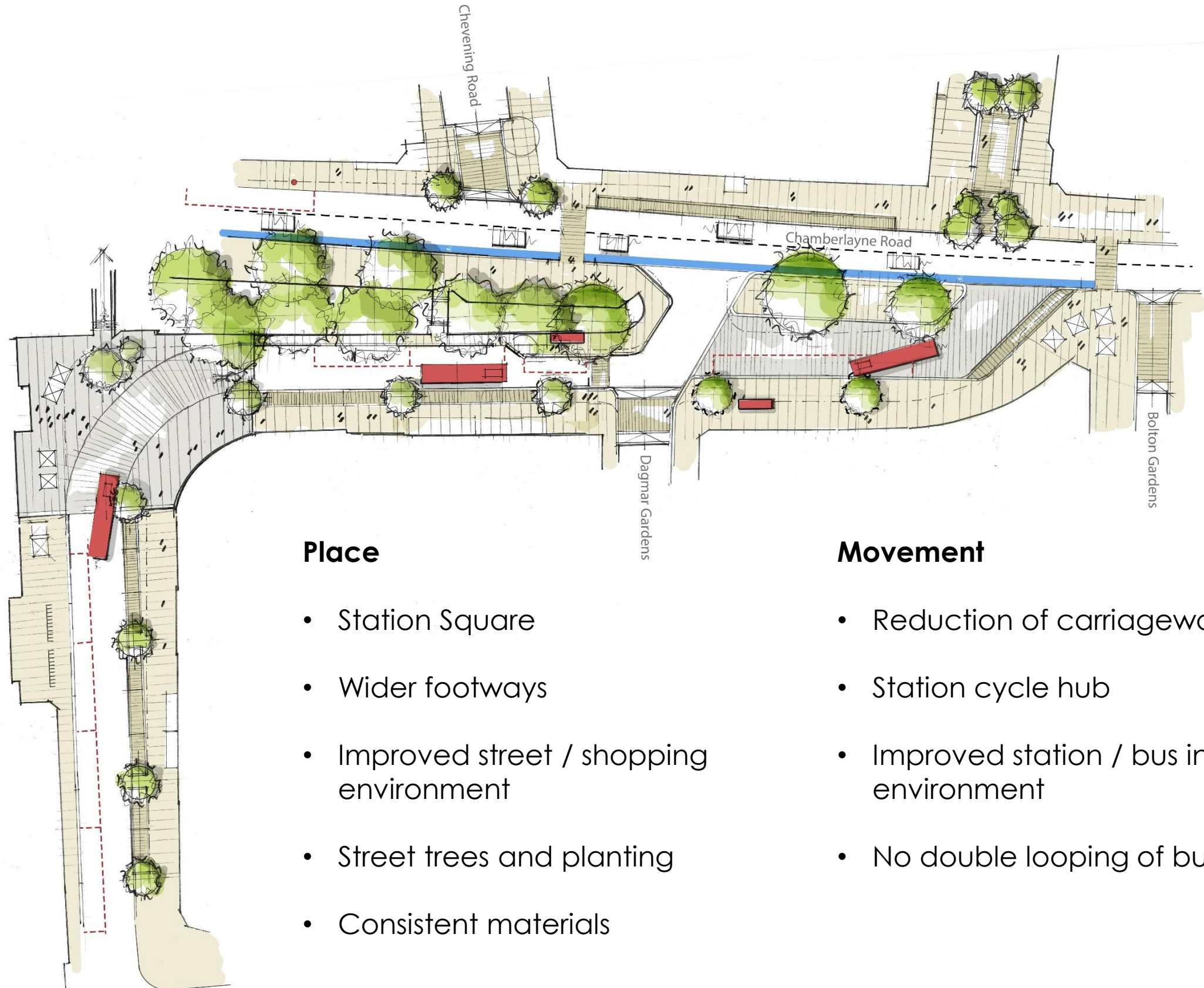
- More welcoming pedestrian environment
- Wider footways outside shops
- Street trees and planting
- Consistent materials
- Removal of street clutter

Movement

- Carriageway narrowed to 6.2m
- Nicer pedestrian environment / greater number of crossings
- Improved bus accessibility
- Improved cyclist safety
- Inset parking / loading into footway

Kensal Rise Station - Station Terrace Section

Kensal Rise Station – Station Terrace



Place

- Station Square
- Wider footways
- Improved street / shopping environment
- Street trees and planting
- Consistent materials

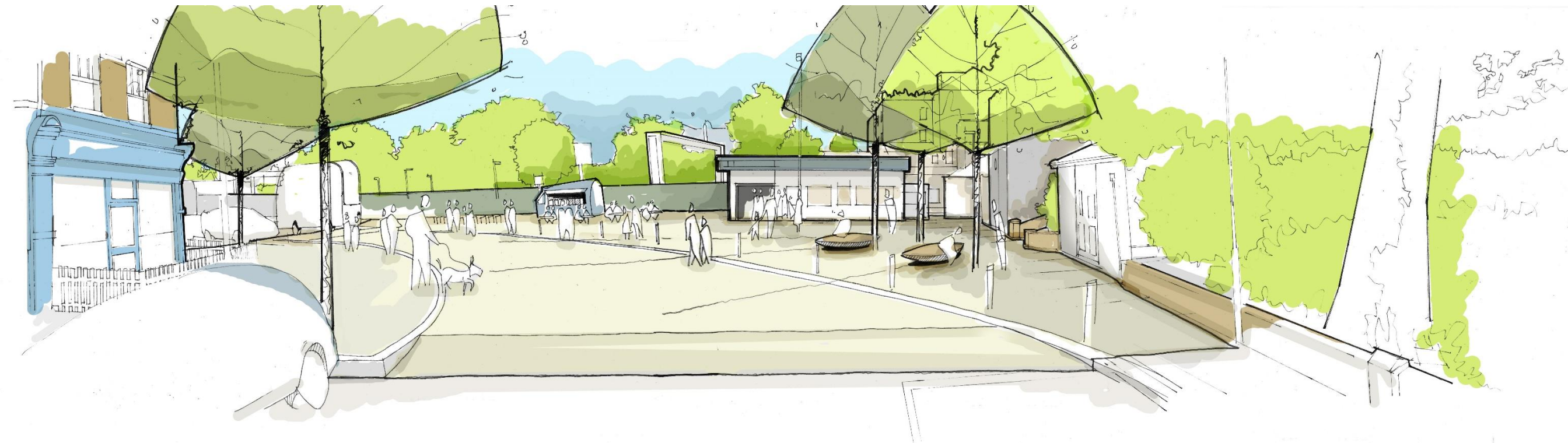
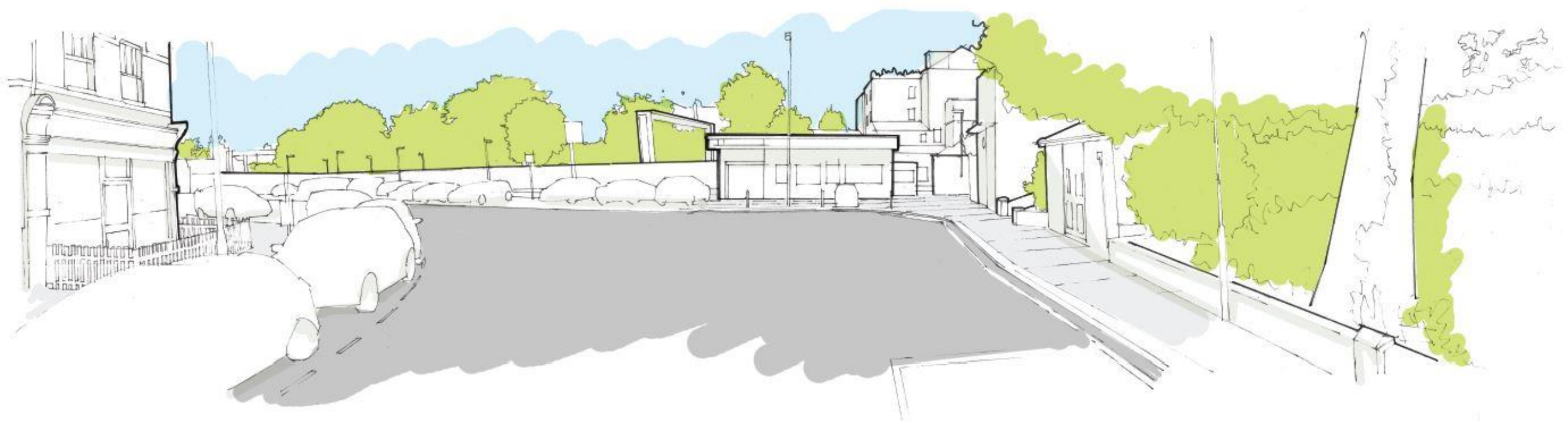
Movement

- Reduction of carriageway
- Station cycle hub
- Improved station / bus interchange environment
- No double looping of bus 302 route

Artist's Impression of Station Terrace (Looking towards Tesco's)



Artist's Impression of Station Terrace (Looking towards Kensal Rise station)



How You Can Help

How You Can Help

Key messages

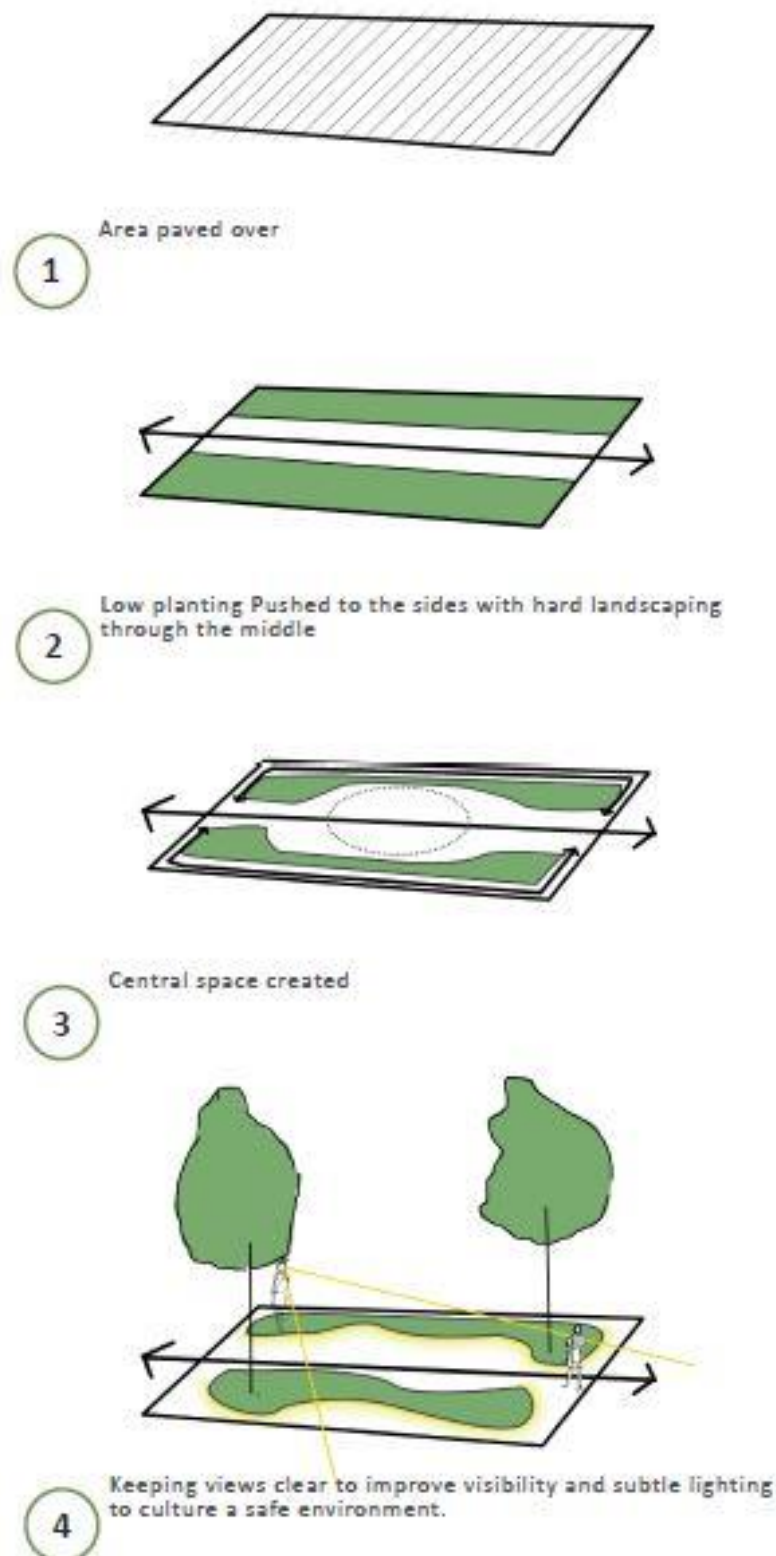
- Local community-led scheme
- Secured TfL's bus priority funding – to reduce bus pinch points and improve bus reliability
- **BUT** the scheme **will also**:
 - Provide better conditions and amenity for local people and businesses
 - Improve the pedestrian and cyclist environment
 - Improve the street setting, appearance and public realm
 - Create a more welcoming and attractive neighbourhood

Spread the messages

- Consultation is about hearing everyone's point of view and comments. Unfortunately, most of the time it's only people who disagree / dislike the scheme that take the time to complete the questionnaire and send comments
- We would love for people who like the scheme to speak up too! Collecting positive feedback will help the scheme progress too.

Help enable work to get on the ground

Potential Community Led Schemes – Pocket Park Areas



Proposed planting palette to respond to site conditions for example spaces under shade can have a range of ferns and other shade tolerant species.



Tree uplighting



New urban planting in Dalston, London

Potential Community-Led Schemes - Gradient Garden (shaded area)

Planting for Shady Area



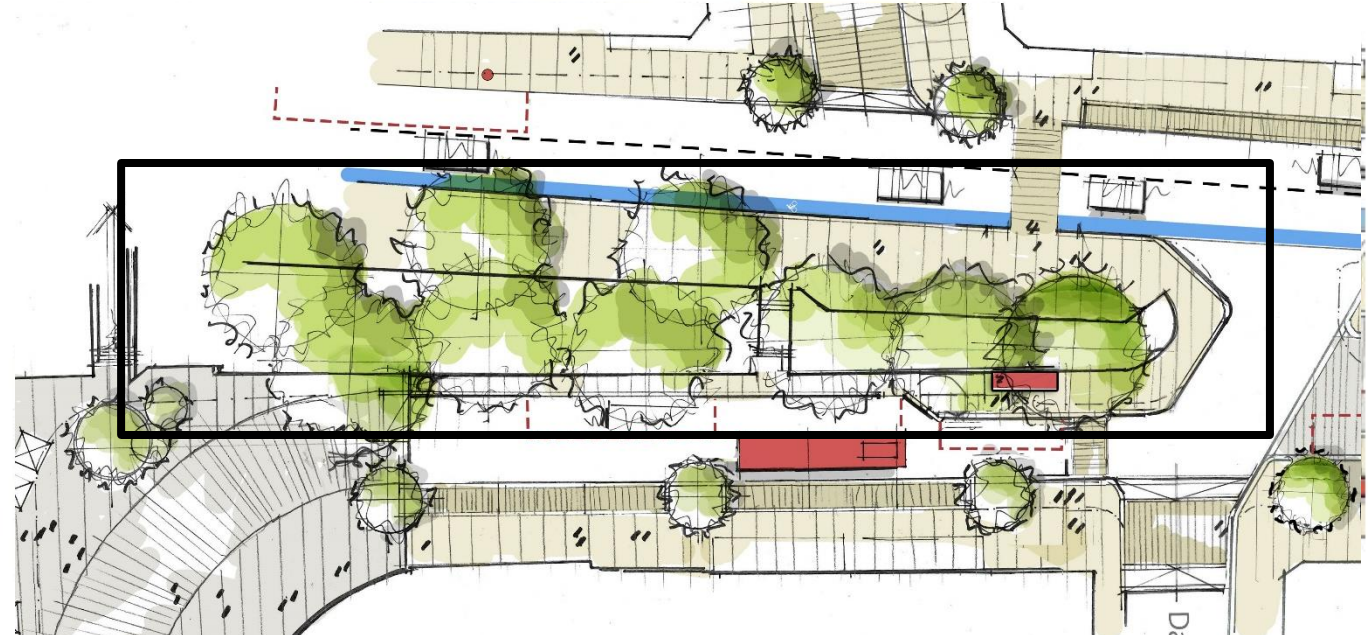
Existing shady area



Trachelospermum jasminoides used as a groundcover



Ferns planted on slope



Gradient Garden (shaded area)

Planting species for shady area



Blechnum spicant

J F M A M J J A S O N D



Polystichum polyblepharum

J F M A M J J A S O N D



Dryopteris filix mas

J F M A M J J A S O N D



Astrantia 'Buckland'

J F M A M J J A S O N D



Brunnera macrophylla "Jack Frost"

J F M A M J J A S O N D



Omphalodes verna

J F M A M J J A S O N D



Asplenium scolopendrium

J F M A M J J A S O N D

Discussion

What's Next?

Programme and Key Milestones

