



Wembley Park Key Worker Housing



Welcome to the Lexington Building, Wembley Park

The Lexington Building is owned and run by i4B Holdings Ltd – a company owned by Brent Council with the purpose of delivering affordable, high quality housing.

The block is looking to welcome public sector key workers including council/government staff, teachers, NHS staff, and blue light service staff.

To apply, visit our [key worker housing website](#)



The Apartments



We are accepting applications for both one and two bedroom apartments

🎨 All apartments come with a shower/bath and WC as well as modern appliances including a single electric oven with a dual fan, four burner induction ceramic hob and a built in fridge freezer and dishwasher

🎨 Security – all buildings fitted with access cards controlled secure doors and CCTV in communal areas

🎨 Situated in Wembley Park, the development benefits from fibre optic installation, allowing for fast internet connection

🎨 All flats have access to a private balcony, as well as communal living spaces and gardens

🎨 Residents also have access to two podiums with a play area and landscaped area

🎨 The block has up to 15 available car parking spaces



Renting



Our affordable rents are 65% of the market rate and are inclusive of service charges

Two sizes of apartment available:

One-bed: £992 pcm

Two-bed: £1,122 pcm

No deposit required



Wembley Park



🎨 The building is just a 10 minute walk away from both Wembley Park Underground Station and Wembley Stadium Railway Station – arriving at Central London in 10 minutes

🎨 Situated in the heart of Wembley Park, the Lexington Building is a stone's throw from Boxpark Wembley and the LDO, which has venues to cater for every taste

🎨 Wembley Park benefits from a variety of cultural and sporting facilities, including a nine screen cinema, a theatre and gyms

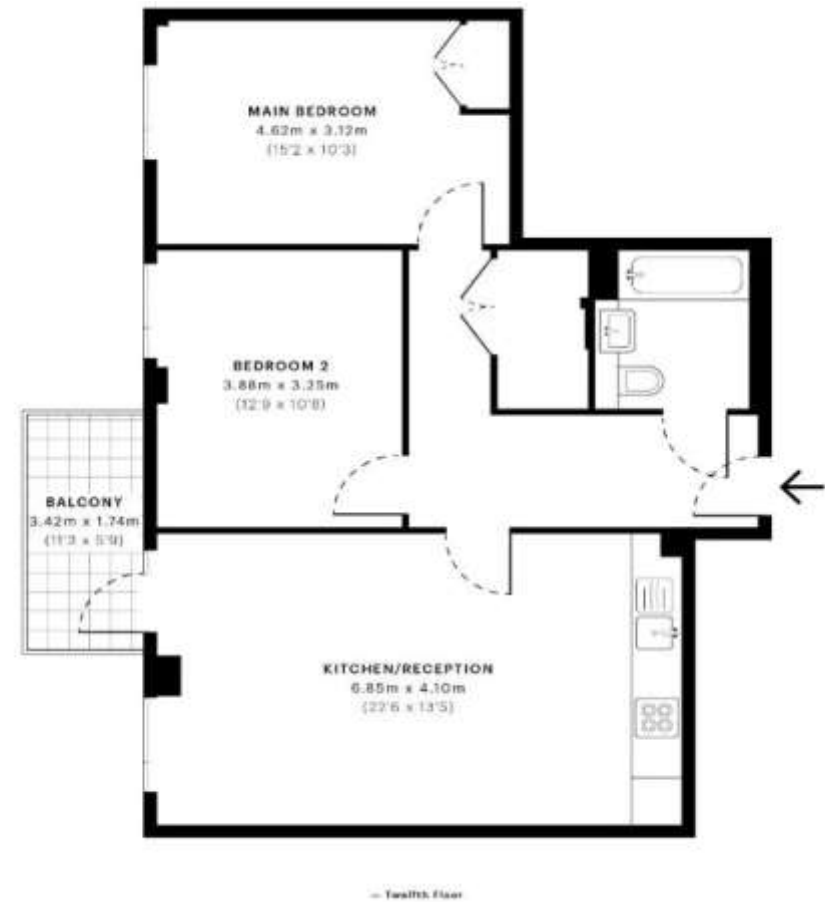
🎨 There are several supermarkets nearby including Sainsbury's Local, Lidl, Asda and Wembley Park Market



Floor plans



Sample one bedroom flat



Sample two bedroom flat



Contact us

i4B Holding Ltd.

9 Engineers Way,

Wembley Park,

Wembley HA9 0FJ

Email: keyworderhousing@brent.gov.uk

Website: www.brent.gov.uk/keyworderhousing